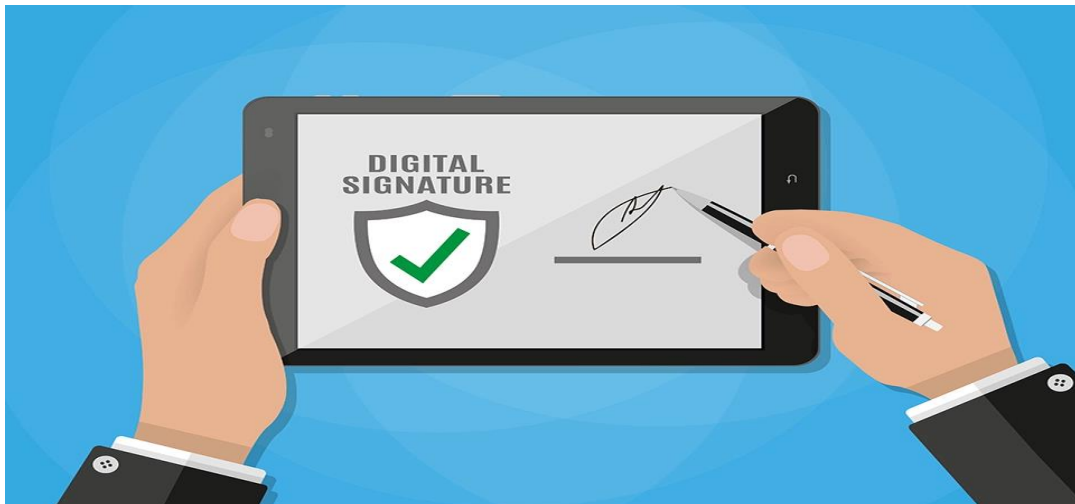



Digital Signature Installation Guide Book



Step 1) Update to latest Microsoft Edge version

About




 Microsoft Edge
Version 103.0.1264.71 (Official build) (64-bit)

Microsoft Edge is up to date.

Download Updates over metered connections

Automatically download updates over metered networks (for example, cellular network) and apply them on browser restart. Charges may apply.

Step 2) Plug DS Key (Pen drive)

Name	Date modified	Type	Size
 autorun	01-07-2018 12:52 PM	Application	17 KB
 autorun	01-07-2018 12:52 PM	Setup Information	1 KB
 ePass2003India-Setup	01-07-2018 12:52 PM	Application	1,939 KB

Run the setup file and install the setup.

Step 3) Software Installation

Download and install following setup from

<https://eprocurement.synise.com/softwareplugins.asp>

1. mandatory setup
2. Register dc

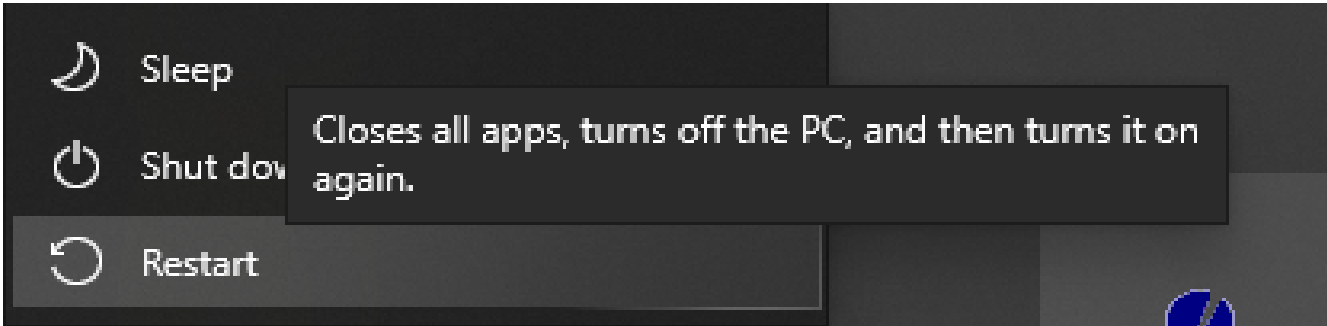
Required Plugins-To Upload Digital Certificate

- Windows 7 & Windows Vista
- Mandatory Setup
- Register Setup
- Microsoft edge DSC installation guideline
- Aladdin eToken Driver (for Microsoft Windows 2000, XP, 2003, Vista)
- eMudhra WatchData eToken Drivers (for Microsoft Windows 2000, XP, 2003, Vista and windows 7)

Back

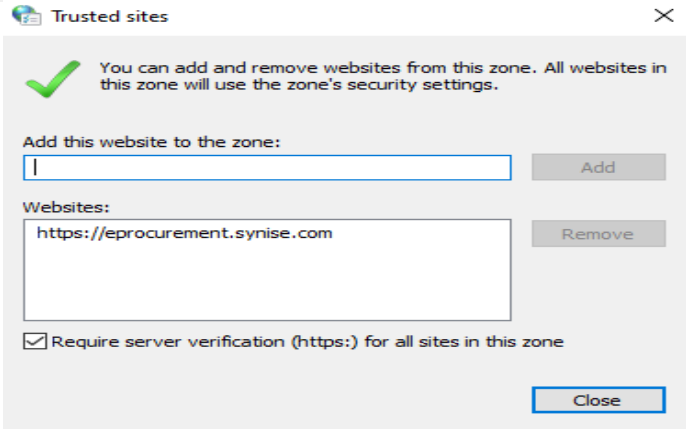
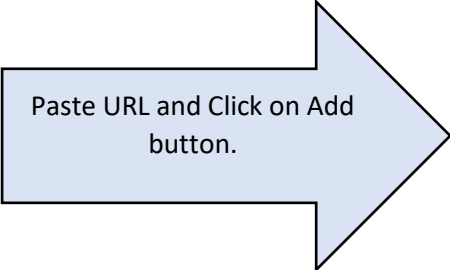
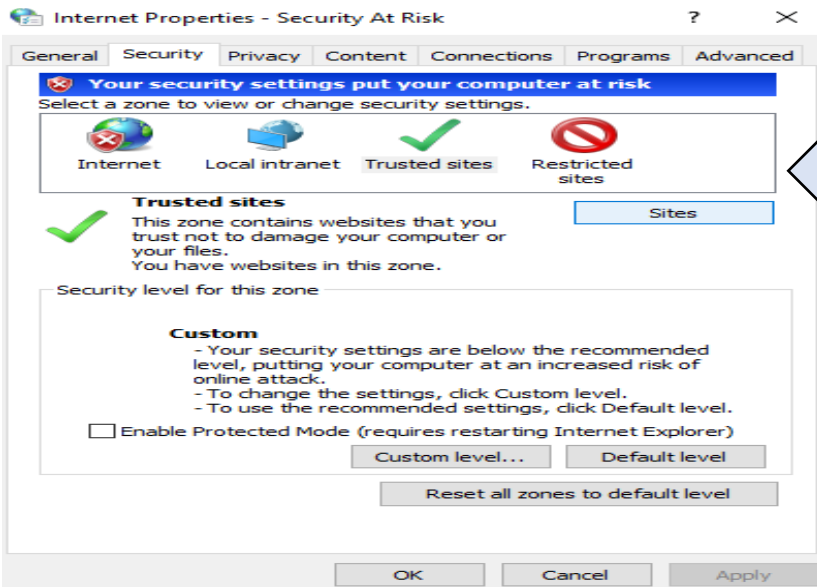
Step 4) Restart System

Restart your System.

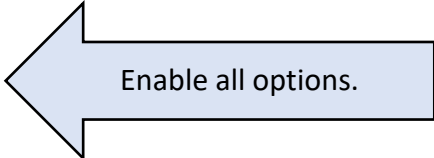
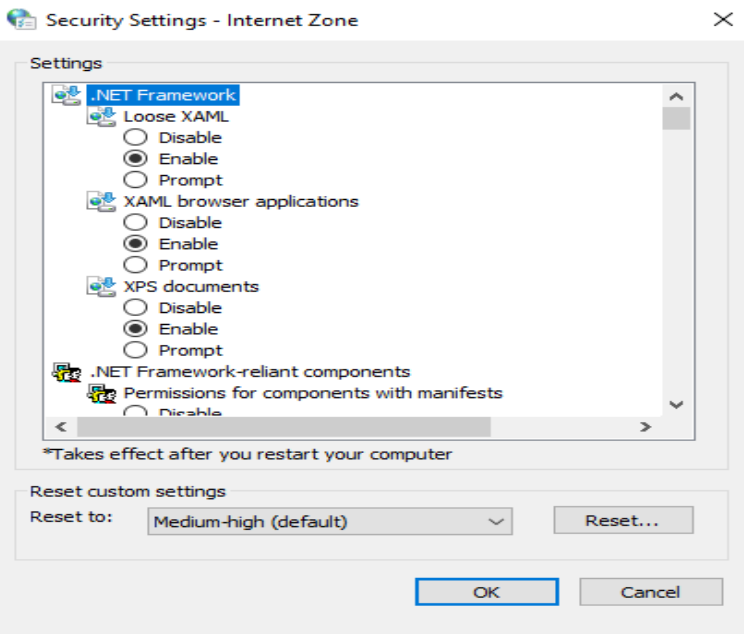


Step 5) Control panel Setting

1. Open Control Panel > Internet Properties: -
 - In security > trusted site > sites > **add site**.



- Internet option > security > **Internet** > custom level > set all option to [**Enable**]
- Internet option > security > **Local internet** > custom level > set all option to [**Enable**]
- Internet option > security > **Trusted sites** > custom level > set all option to [**Enable**]



Save all and close Control Panel.

Step 6) Microsoft Edge Setting

In Setting > Open Default Browser Option: -

- [Make Microsoft Edge as Default Browser] set as **[Make Default]**
- [Let Internet Explorer open sites in Microsoft Edge] set as **[Incompatible site only (Recommended)]**.
- [Allow sites to be reloaded in Internet Explorer mode (IE mode allow)] **[set to Allow]**
- [Internet Explorer mode pages] Add **SYNISE URL** and save it.

The screenshot shows the Windows Settings application with the 'Default browser' section selected in the left-hand menu. The main content area displays four settings, each with a blue arrow pointing to it from the right, labeled 'Step 1' through 'Step 4':

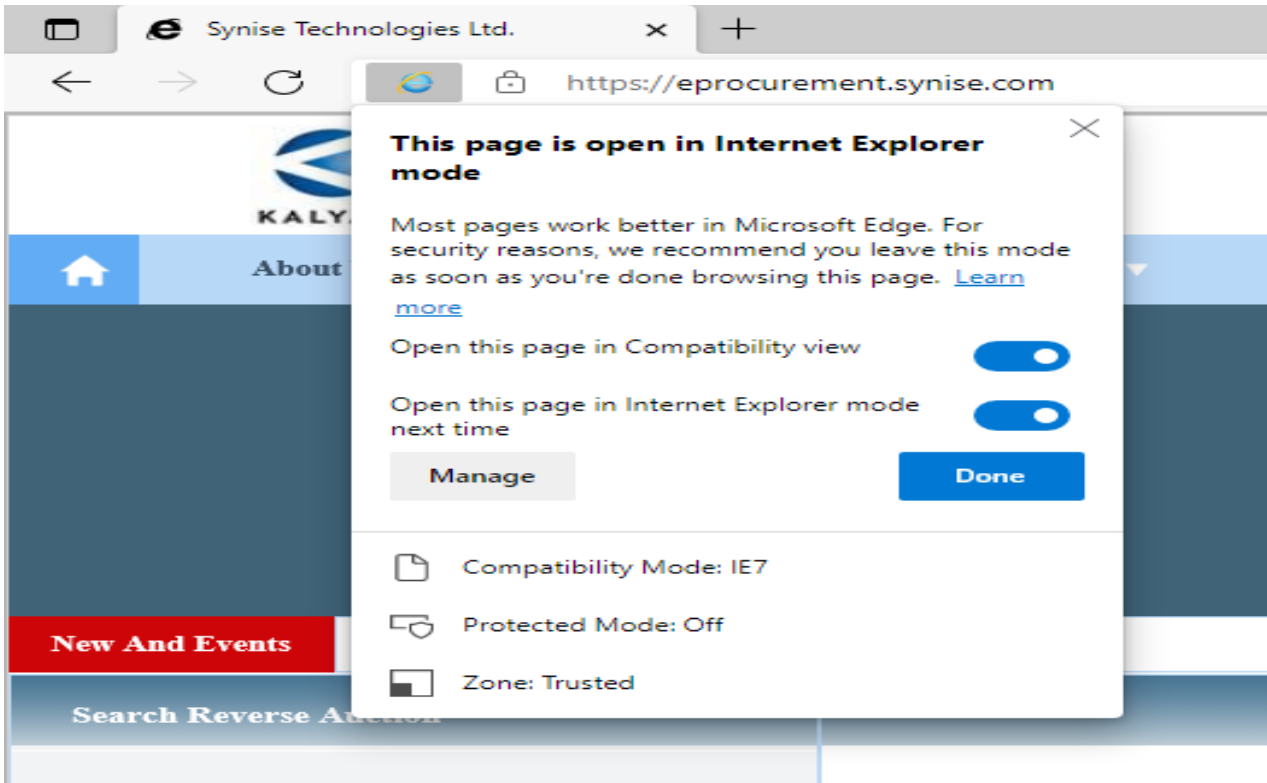
- Step 1:** 'Microsoft Edge is your default browser' with a 'Make default' button.
- Step 2:** 'Let Internet Explorer open sites in Microsoft Edge' with a dropdown menu set to 'Incompatible sites only (Recommended)'.
- Step 3:** 'Allow sites to be reloaded in Internet Explorer mode (IE mode)' with a dropdown menu set to 'Allow'.
- Step 4:** 'Internet Explorer mode pages' with an 'Add' button and a table of pages.

Page	Date added	Expires	
https://eprocurement.synise.com/			
https://eprocurement.synise.com/validatedigital.asp			

Save all setting and restart the Microsoft-Edge.

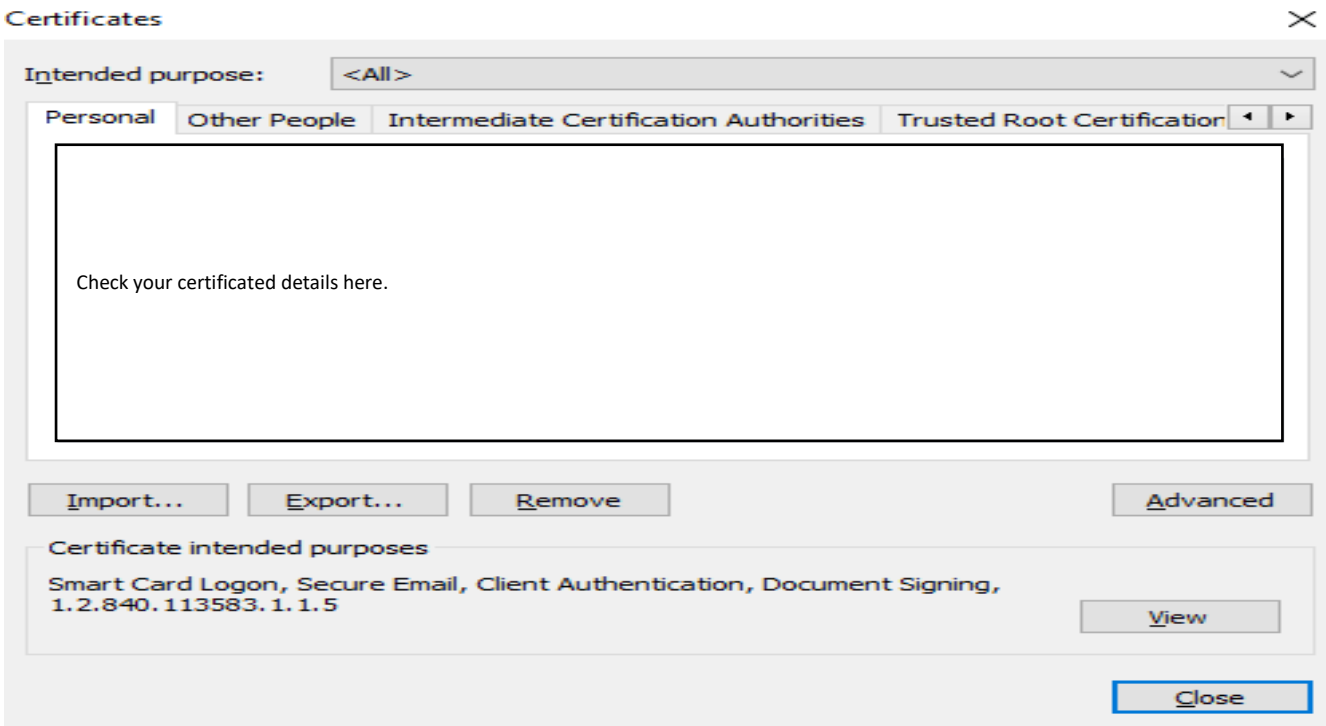
Open Browser, Beside URL part just **click** on the icon and check the below option are on as shown in image.





Step 7) Check certificates

Open setting > privacy, search and services > scroll down to security > Manage certificates.



For any queries contact +91 7774013248

